



Central E-cho



Central Mangrove Public School

Respect — Safety — Personal Best

1708 Wisemans Ferry Road
Central Mangrove NSW 2250
T: 02 4373 1156
E: centmangro-p.school@det.nsw.edu.au
W: www.centmangro-p.schools.nsw.edu.au

23 September 2022

TERM 3

WEEK 10

Principal's Message

Reflecting on term 3, we have had many varied and valuable experiences offered to our students. Students, staff and families have worked hard to ensure positive outcomes in many areas of learning. We hope you take some time over the next two weeks to rest and recharge ready for another full and productive term 4.

Term 4

School resumes for **term 4** on **Monday 10 October** for both **students and staff**. We will hit the ground running with the many learning opportunities and activities planned. A student teacher, Ms Webster will be joining us for the first four weeks. She will be working closely with Mrs McCloud and CM3. We welcome her to our school community.

Farewell Ms McDonald

Ms McDonald, our School Administration Manger has decided to take extended leave pending retirement. She has worked at our school for 5 years and with the Education Department for over 20 years in a variety of schools large and small. We appreciate the work she has done at Central Mangrove PS including tending to sick students, the worm farm, providing ice packs, contacting parents, running Breakfast Club and helping to keep the teachers organised. We wish Ms McDonald well in her future endeavours. Mrs Quinlan, who has been relieving in the role for 2 days will pick up the other days and will now relieve in the role for the 7 day fortnight moving into next year.

wishing
you 
ALL THE BEST

CALENDAR DATES

WEEK 1 - TERM 4 2022

Mon 10 Oct	Students and Staff Return for Term 4
Wed 12 Oct	Breakfast Club
Thur 13 Oct	Breakfast Club
Fri 14 Oct	Breakfast Club Cake Drop off for Mangrove Mountain Country Fair

WEEK 2 - TERM 2 2022

Tues 18 Oct	Breakfast Club
Wed 19 Oct	Breakfast Club
Thur 20 Oct	Breakfast Club
Fri 21 Oct	Breakfast Club

School Visitor Check-in-concierge Device and Ap

Many parents and carers are familiar with the process of using their phone to scan our school's QR code and sign-in as a visitor but what happens if you forget your phone? Next term, our new School Visitor Check-in-concierge device and ap is designed to help you check-in and check-out in mere moments! You can continue to check-in with your phone, but if you need an alternative, please use the concierge device in front reception.

School
Visitor
Check-in



Mangrove Mountain Country Fair Cake Stall

The Country Fair is on Saturday 15 October and Central Mangrove Public School P&C have a reputation to uphold with the running of the Cake Stall. We are seeking your support to bake goods for the stall. If all donations of baked goods could be dropped to the stall on the day, 15 October that would be fantastic. If that is not possible, please drop them to school on Friday 14 October and we will organise to get them there on the day. We need your support on the day. If you are able to give a little of your time to work on the stall please contact the school office. Cake boxes can be picked up from the school or sent home with your child if you need them, just let us know how many you need. The students will also be making cakes, slices and decorating them at school to sell. All students in each class will have art on display at the fair and many of our students entered in the colouring competition that will also be



Parent Teacher Meetings

Many parents took the opportunity to meet with their child's classroom teacher this week to celebrate achievements and strengths and share future goals and areas for improvement. When care givers and the school work together it is amazing what is achieved.

Swimming and Water Safety

The swimming and water safety lessons this week for students in years 2-6 have been very tiring but valuable. It promotes safer participation in water-based activities, increase fitness, resilience and well-being and reduced risk of drowning.

Check-in Assessment

Years 3-5 will participate in Check-in-assessment early next term. The Check-in assessment is a NSW Department of Education online literacy and numeracy assessment available to support schools to assess and monitor student learning. The assessment can supplement existing school practices to identify how students are performing in literacy and numeracy and to help teachers tailor their teaching more specifically to student needs. All students complete a reading assessment and

numeracy assessment. Students are asked to bring headphones or earbuds that plug into a computer to enable them to hear audio during the assessment.

LEAP Robotics

We have been fortunate to be able to participate in LEAP Robotics Lego Foundation grant program in conjunction with Macquarie University. Last week students in CM2 and CM3 had the opportunity to explore and challenge themselves with the support of a facilitator in the Discover and Challenge programs. Students will now take time to research information about alternative energy sources and then present their findings using the Lego that has been provided with the program. Some students may get involved with the competition component of this program later in term 4.



Kindergarten 2023

Enrolments for our 2023 Kindergarten cohort are now open. If you have a child starting school next year please visit our web page and fill in the online enrolment. You can also call or drop into the office to collect an information pack, ask any questions and organise a time for tour of our wonderful school.



Home Reading – Thursday 22 September

Congratulations to William, Dayna and Electra for winning their class home reading \$20 gift vouchers for reading for at least 20 min in 20 nights over 5 weeks. We encourage all students to read each night and complete their Home Reading Card. It has been wonderful to see more and more students receiving the awards and getting involved in home reading. We will send out new home reading cards next term.



COVID Measures

All students, staff and their families should follow NSW Health's advice to reduce the risk of not only COVID-19, but also other illnesses that may affect schools this winter such as the flu. Please continue to reinforce the following NSW Health messages with your students, staff and families:

- Stay home if unwell or showing even the mildest of symptoms.
- Get tested immediately for COVID-19 if you become symptomatic and isolate until you receive a negative result and are symptom free.
- Keep up to date with vaccinations – including COVID-19 booster shots when eligible and the flu vaccine, which is available from your local GP, pharmacy or Aboriginal Medical Service.
- Practice good hand hygiene by washing regularly with soap and water.
- Take a RAT before visiting vulnerable loved ones or going to large gatherings and events.

Libby Cullen—Principal

Ms McDonald's Farewell



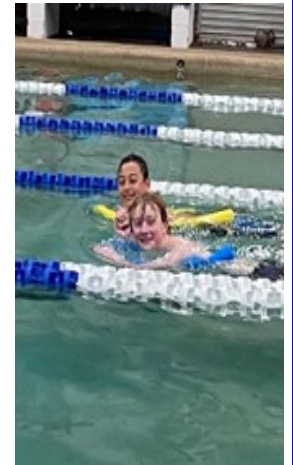
Term 3 Week 9 Assembly Award Winners



LEAP Robotics



Swim and Water Safety Scheme



TEACHER AWARDS TERM 3 WEEK 9	
CM1	
Elijah	Outstanding effort in reading and writing
Isabella	Working hard to learn sounds
Georgia	Working hard in all lessons
CM2	
Sheng	His creative thinking and engineering skills
Cora	Her great efforts and respect during the robotics incursion
Mason	Always caring and helping his friends
PRINCIPAL AWARD TERM 3 WEEK 9	
CM1	
Finley	Enjoying kicking the ball and playing with others in the playground
CM2	
Adrian	Having fun and including others in playground games
CM3	
Brock	His willingness to help organise things around the school

From the Office

Year	Event	Payment Amount	Date Due
K — 6	Vol School Contribution	\$ 50.00	OVERDUE
K — 6	Paper levy,	\$ 25.00	OVERDUE

Breakfast club



Please complete and return paperwork to enable your child to attend Breakfast Club.

A reminder that Breakfast Club is various mornings in the Library 8.45 - 9.05am. A sign will be displayed by the CM2 classroom door when Breakfast Club is running.

**CENTRAL COAST
SELECT
PROPERTIES**

Integrity

Welcome to the Central Mangrove Public School HOME READING PROGRAM

Kids can get so much fun, adventure and ideas from reading books. We're asking kids to get into books by reading for at least 20 minutes each night for 5 weeks. We invite them to join the **Central Mangrove Public School Home Reading Program** with a chance to win a book voucher.

Central Coast Select Properties is proud to partner with your school. The kids that join the program will be entered into a class draw for a **\$20 Scholastic Book Voucher**.

We are proud to support the school by sponsoring the Home Reading Program initiative, and welcome all the kids to pick up a book and start reading.

Yours Sincerely,
 Tony Gilmour
 Principal | L.R.E.A.

Kate Kerlake
 Sales Agent

Meet our team

TONY GILMOUR
0400 723 193

KATE KERSLAKE
0427 233 090

**Contact one of our agents
CALL 02 4324 8486**

Office Address:
 Suite 1, 2/872 Pacific Highway
 Lisarow NSW 2250
 P: (02) 4324 8486
 E: info@ccselect.com.au
 ABN: 45 163 916 881

www.ccselect.com.au

NSW Department of Education

Why attendance matters

When your child misses school they miss important opportunities to:

- Learn
- Make friends
- Build skills through fun

Days missed = years lost

A day here and there doesn't seem like much, but...

When your child misses just... they miss weeks per year and years over their school life

1 day per fortnight = **4** weeks = **Over 1** year missed

1 day per week = **8** weeks = **Over 2.5** years missed



KINDERGARTEN TRANSITION 2023



Tuesday 8, 15, 22 and 29 November 2022

9:30am — 11:00am

At Central Mangrove Public School, our Transition Program is all about the students being ready and feeling comfortable in preparation for our school.

Transition reduces feelings of anxiety for both parents and children through familiarising your child with their new school.

During the Transition sessions, your child will participate in a range of fun and educational activities similar to the activities that occur in a Kindergarten classroom.

- Rotation groups
- Independent activities
- School tours

Central Mangrove Public School

1708 Wisemans Ferry Road, Central Mangrove

02 4373 1156

Positive Behaviour for Learning

The school's discipline code is built on the fundamental beliefs that our school will be a safe and happy learning environment when all students learn to accept responsibility for their own learning and behaviour within a caring and supportive environment. Student responsibilities at our school are to follow these values: safe, respect and personal best. Our focus this fortnight is Playground.

Expectations: Playground

How we show: RESPECT

Share friends, equipment and space

Place rubbish in the bin



How we show: SAFETY

Walk around the equipment



How we show: PERSONAL BEST

Use equipment properly

Play games fairly



CHIME

project

School Holiday Family Event
Thursday
29 September
2022



PROMOTING POSITIVE MENTAL HEALTH AND PARENTING

Managing Mental Illness can make it hard for families to find time to relax and enjoy family time.

For families with children up to 12 years with a parent who experiences mental illness and lives in the Wyong LGA community

Thursday 29th September 2022
10:00am - 2:00pm
The Entrance Community Centre
Battley Ave, The Entrance

- Fun family focussed activities
- Puppet making and play
- Art materials & lunch included

Central Coast Family Support Service

Registrations essential as spaces are limited

4340 1585

ccfss@ccfss.com.au

www.ccfss.org.au

SCHOOL HOLIDAY BASKETBALL CAMP

SHOOTING STARS

27 - 29 SEPTEMBER 2022

BALLER BOOTCAMP

4 - 6 OCTOBER 2022

ALL WEATHER FUN

\$100 FOR 3 DAYS
OR \$45 PER DAY

9AM - 12PM | 5 TO 9 YEAR OLDS

1PM - 4PM | 10 TO 17 YEAR OLDS

BOOK NOW!



PROUDLY SUPPORTED BY:

Community Bank
East Gosford, Kincumber
and Lisarow

Bendigo Bank



CENTRAL COAST BASKETBALL

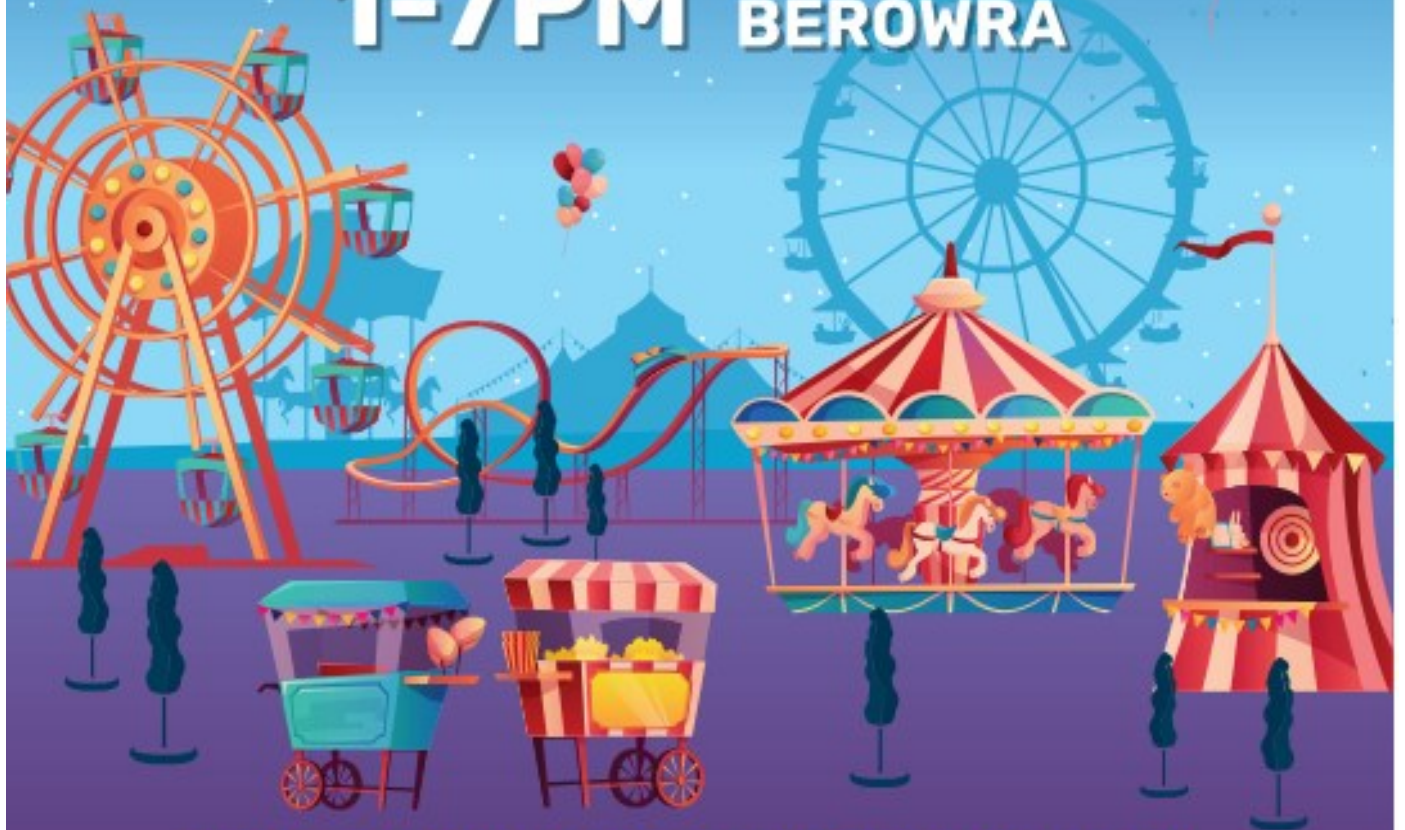


SPOT IT OUT // SPEAK OUT
STAMP IT OUT

BEROWRA PUBLIC SCHOOL

TWILIGHT FAIR

SATURDAY 22ND OCTOBER
1-7PM HILLCREST ROAD
BEROWRA



RIDES - HAUNTED HOUSE - SIDESHOW ALLEY
BOUNCY CASTLES - LIVE ENTERTAINMENT
FOOD STALLS - FACE PAINTING



Fast track your fun and buy
your unlimited ride band today
for \$35 (\$40 on the day).

Platinum sponsor

CASS
PROPERTY

we print it
ACCOUNTS

Berowra
Public School